

Mayview Regional Service Area

Community Inpatient
Utilization

July 2006 – Feb 2012

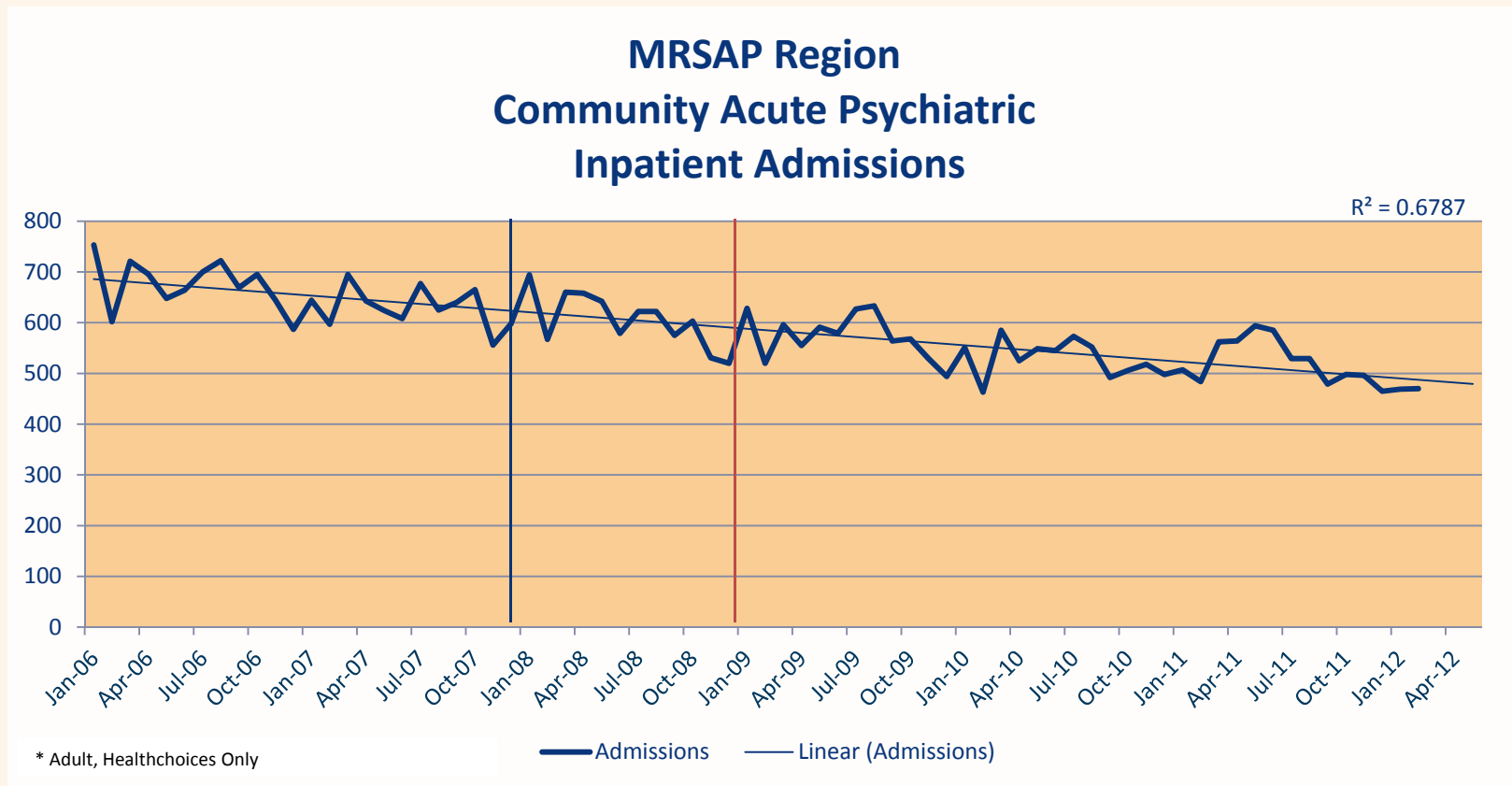
Findings

Tracking since July 2006

- For the region, inpatient admissions, as well as readmissions, per month have slowly decreased over the period.
- For the region, Average Length of Stay has trended upward. The Median Length of Stay, however, usually falls within five to six days.
- Total Inpatient Days per month has trended nearly flat over time.

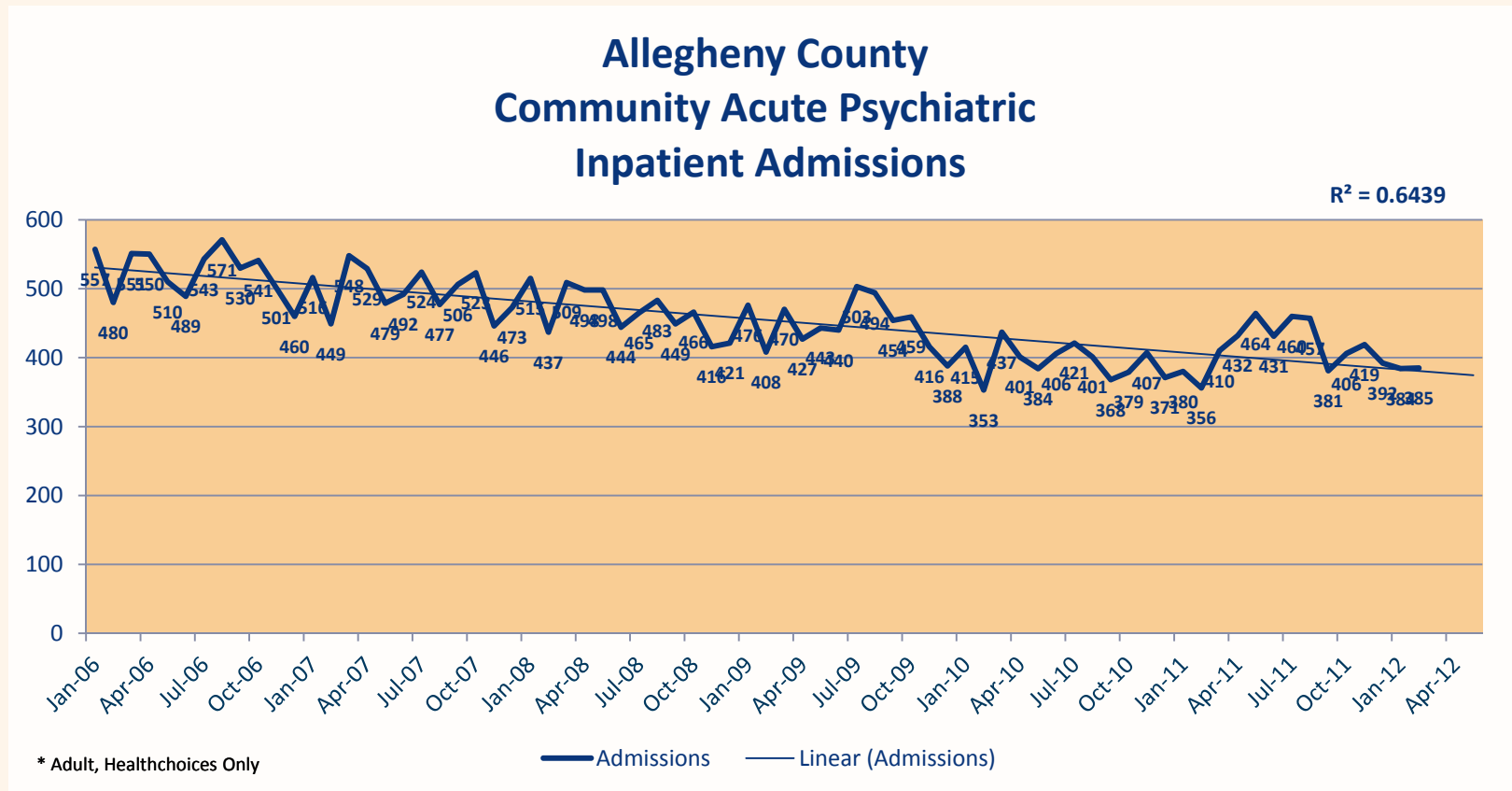
* Upon request, Lawrence and Greene Counties, are no longer included in the analysis.

Inpatient Admissions



- For the region, there continues to be a downward trend.

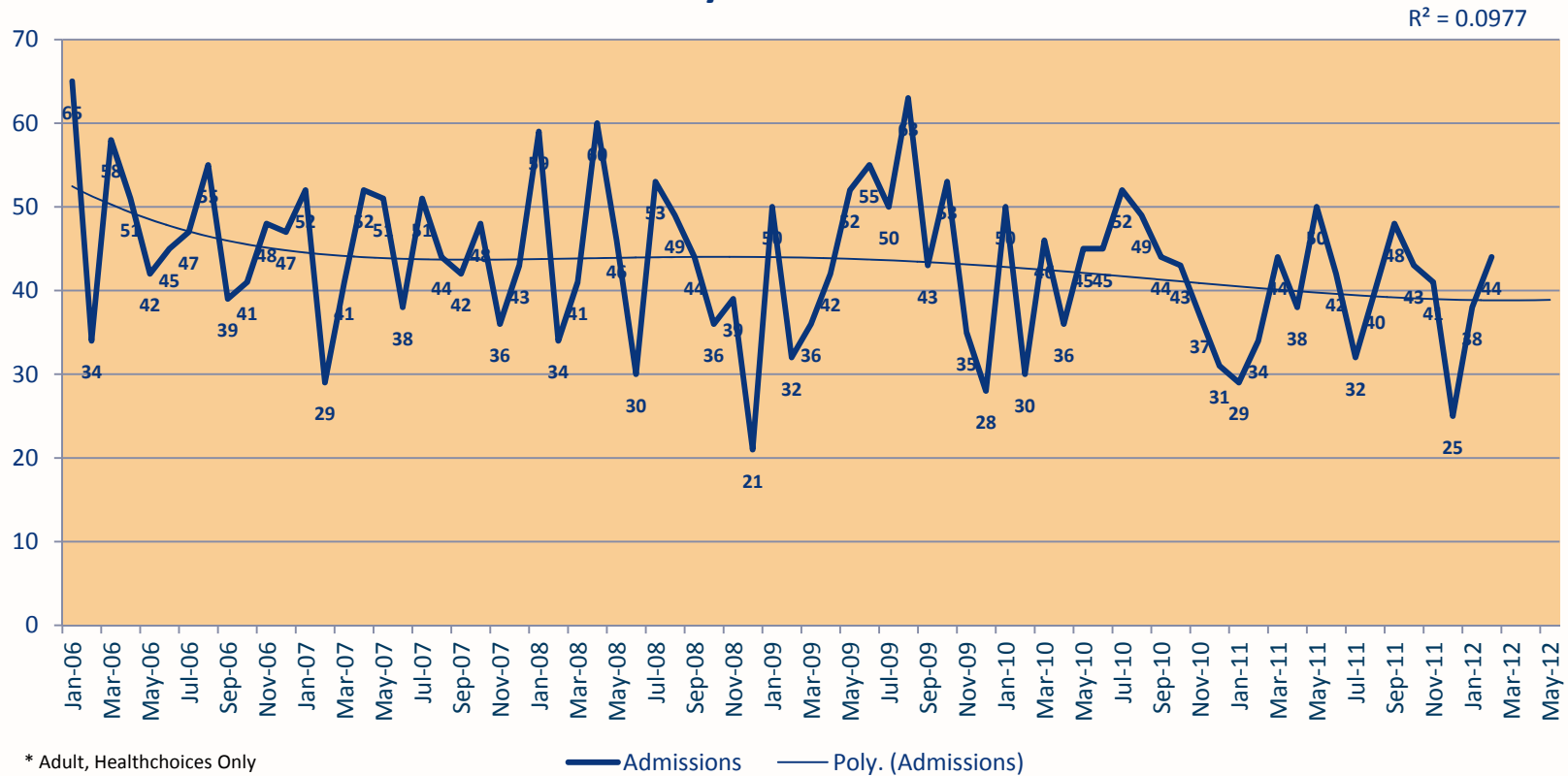
Inpatient Admissions



- Over the entire period, admissions per month trend downward.

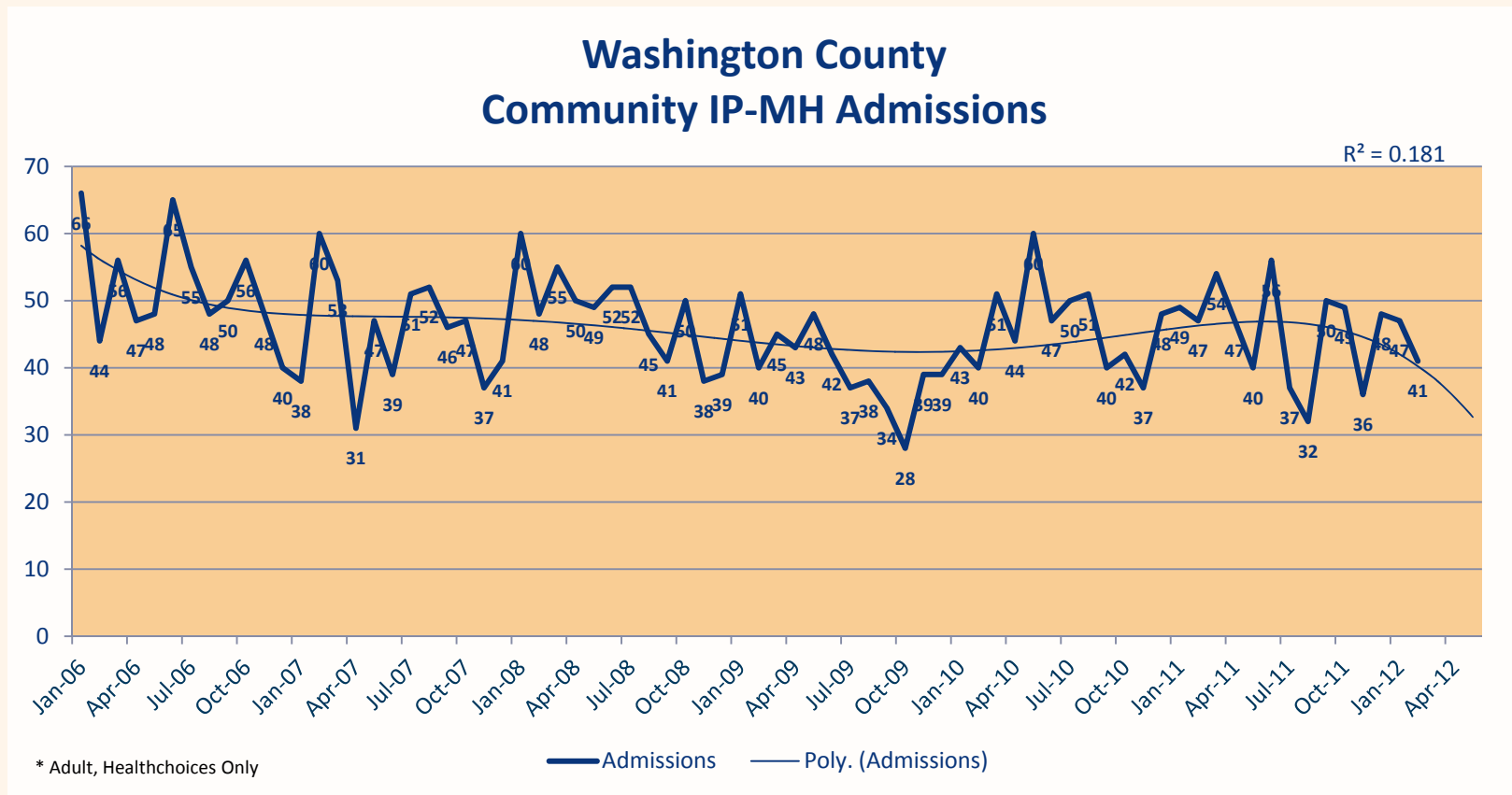
Inpatient Admissions

Beaver County Community IP-MH Admissions



- Monthly admissions vary widely.

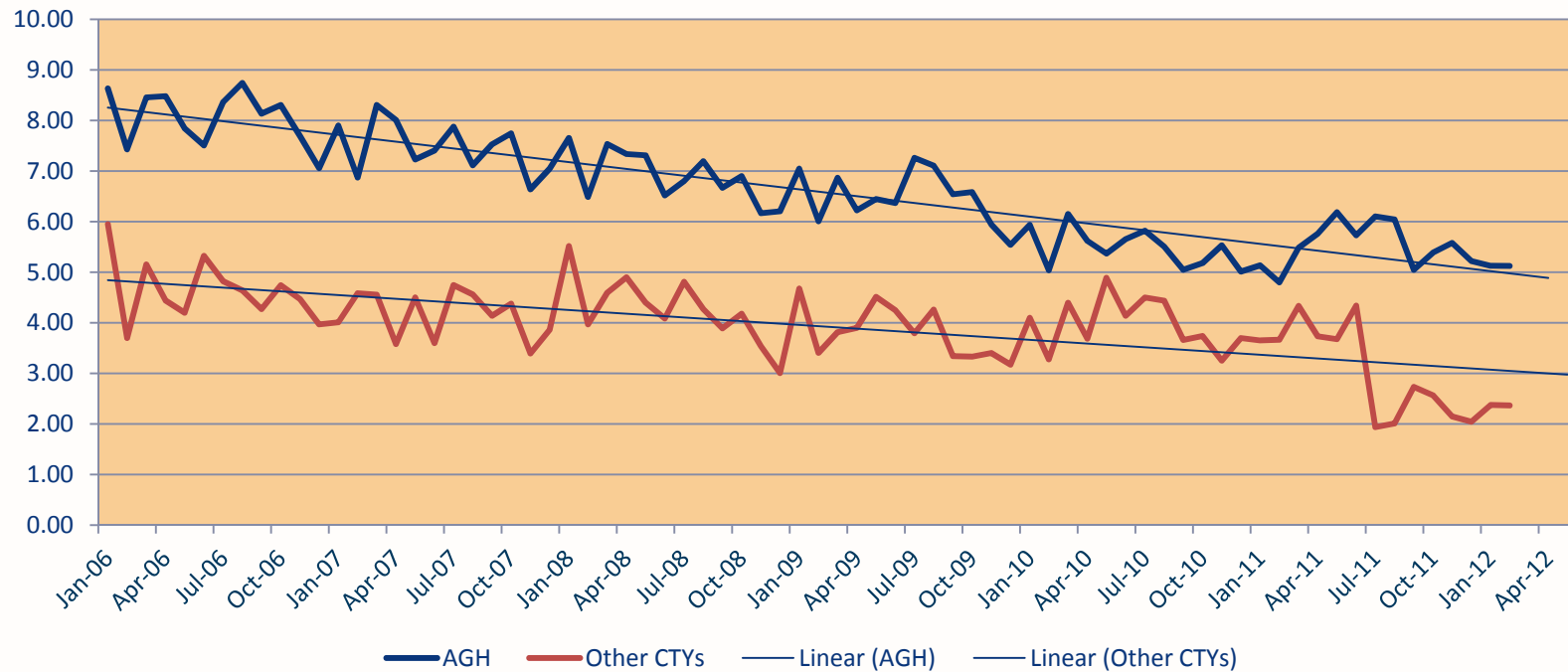
Inpatient Admissions



- Admissions vary, however, overall trend is slightly downward.

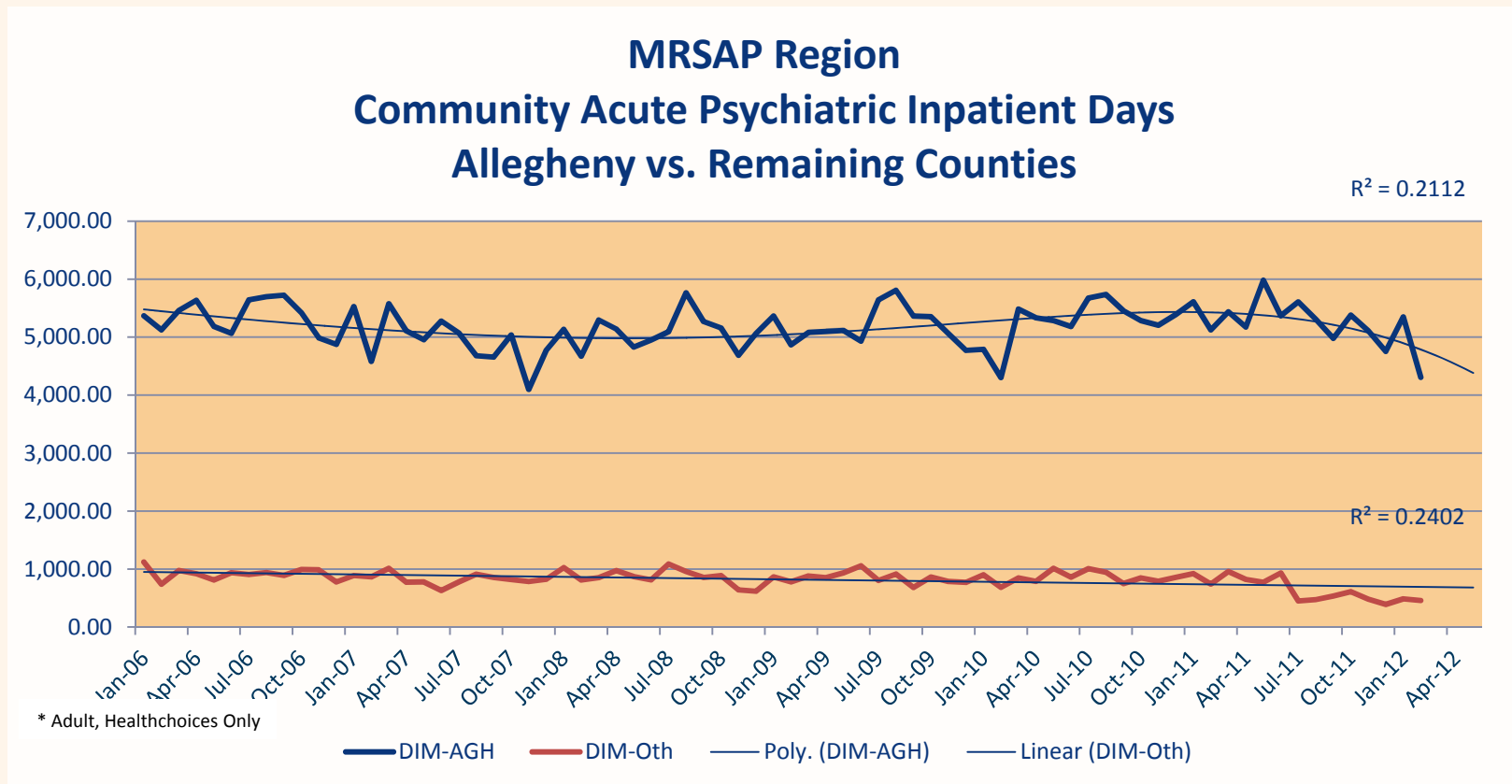
Inpatient Admission Rate

MRSAP Region
Community IP-MH Admission Rate Per 1,000 Enrollees
Allegheny vs. Other Counties



- Allegheny shows the highest admission rate, with an average of 6.62 admissions per 1000 enrollees vs. 3.94 in the two other counties.

Inpatient – Bed Days



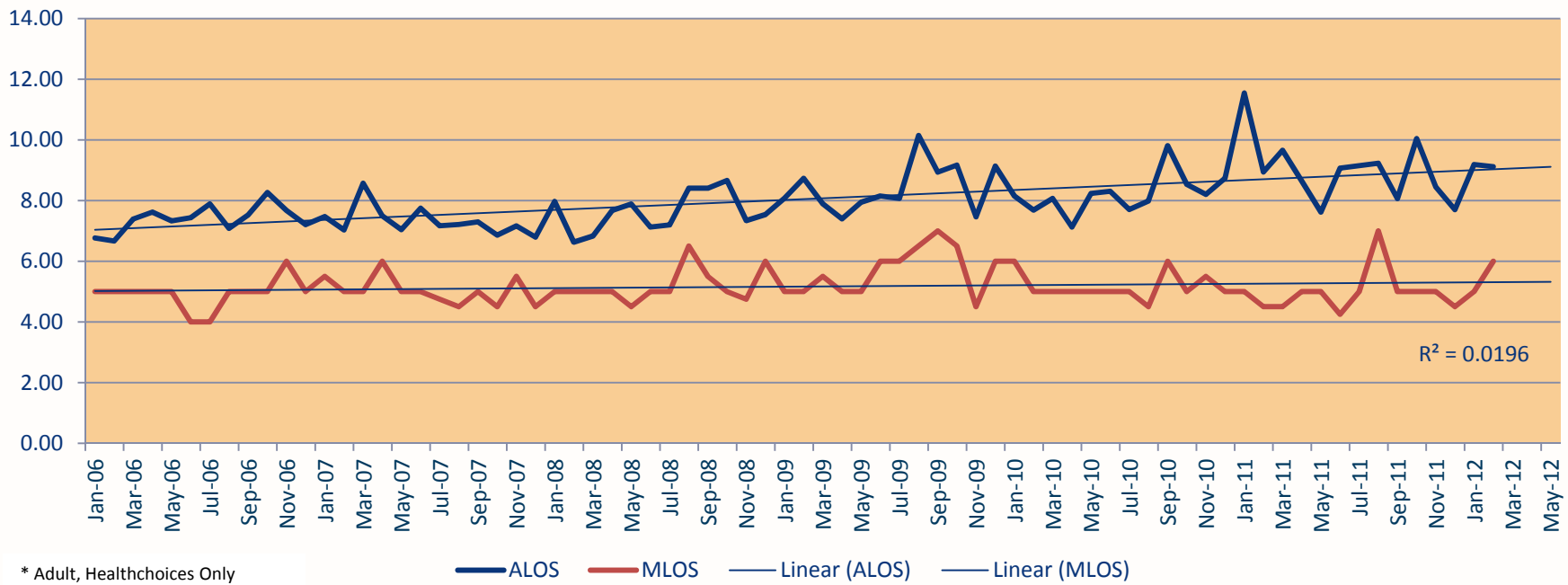
- Total Bed Days per month appears relatively stable over time.

Inpatient Length of Stay

MRSAP Region Community Acute Psychiatric Average/Median Length of Stay

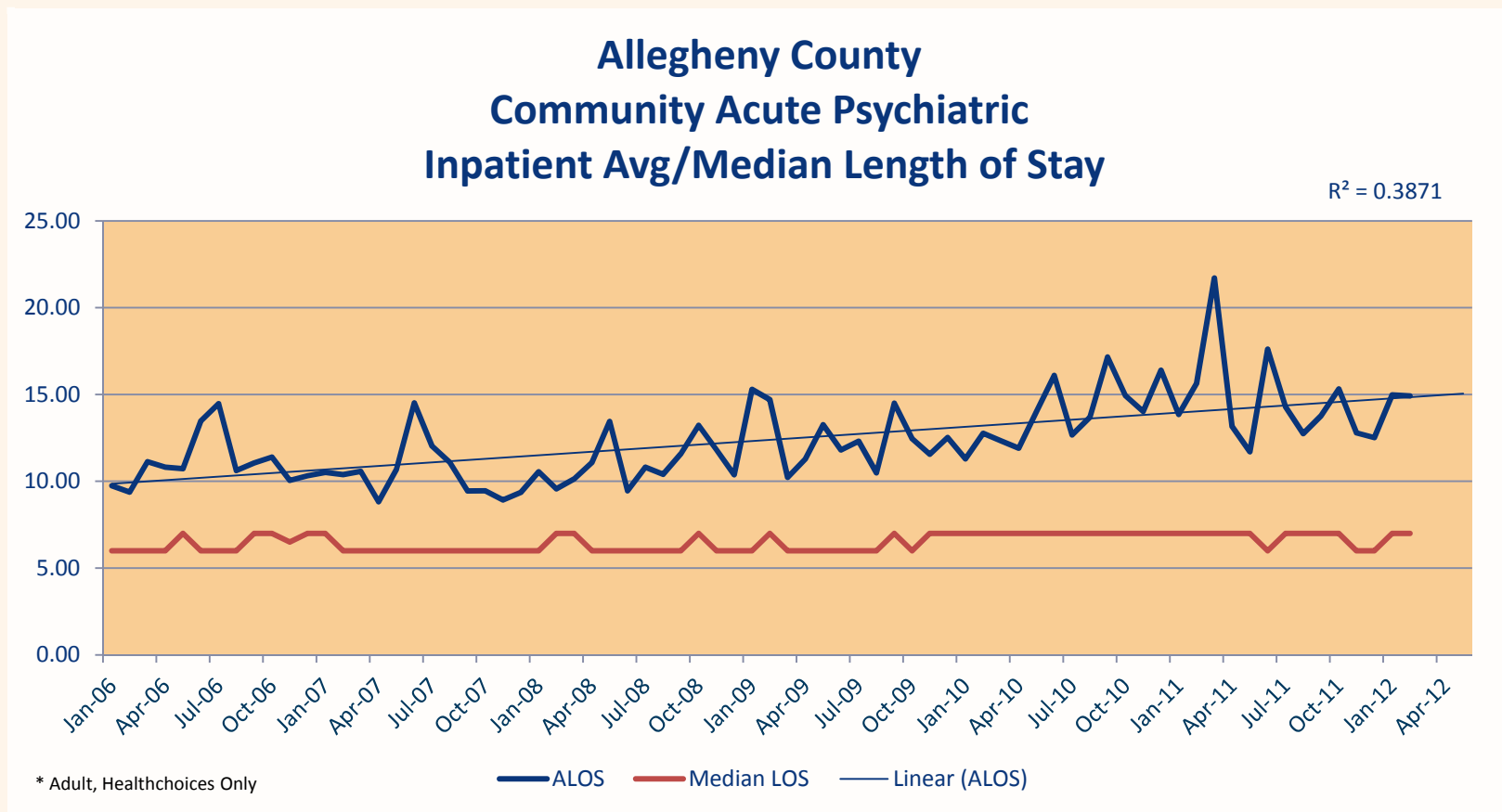
R² = 0.4002

R² = 0.0196



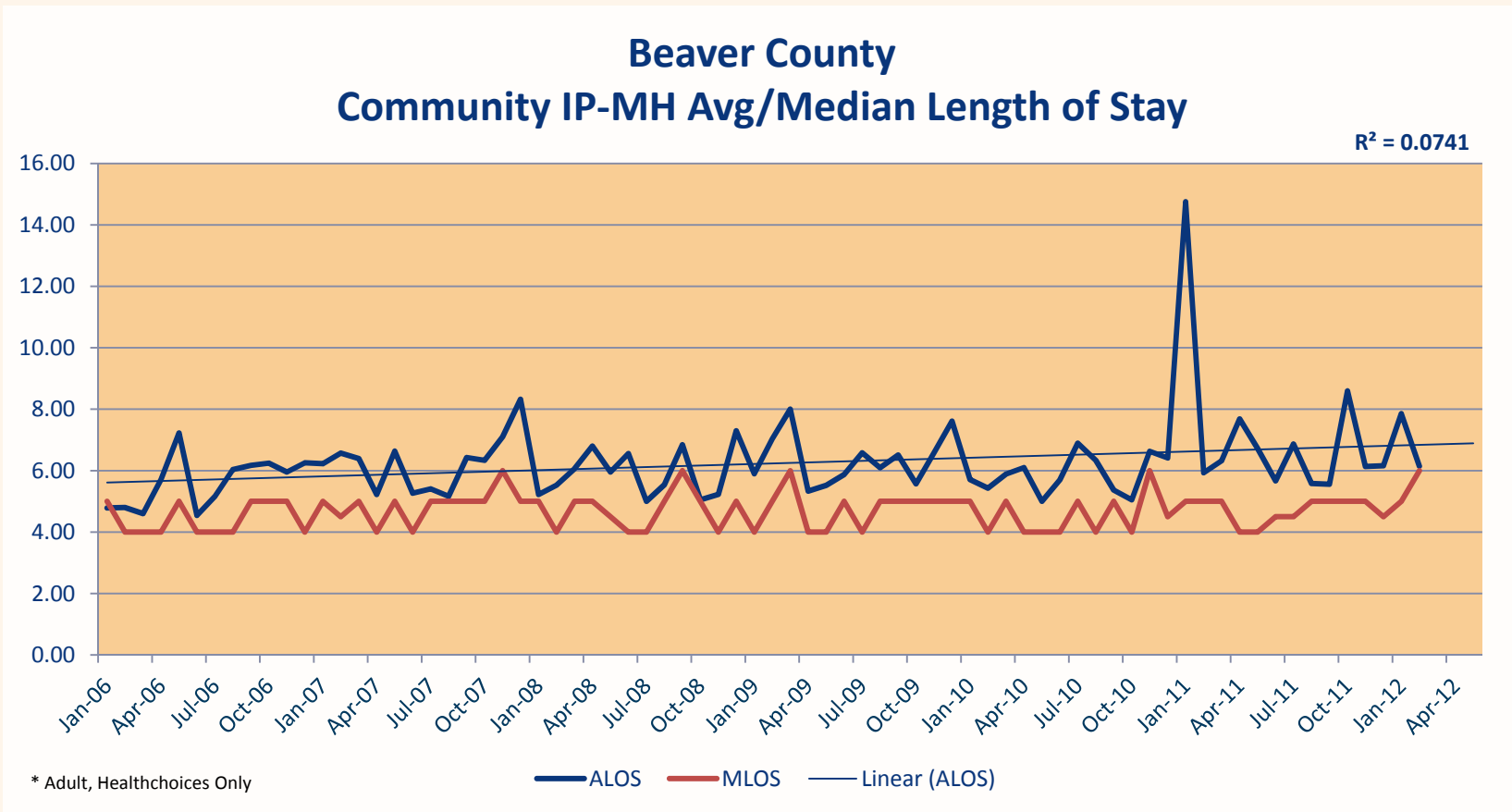
- For the region, ALOS is trending slightly upward. MLOS usually exists between five and six days.

Inpatient Length of Stay



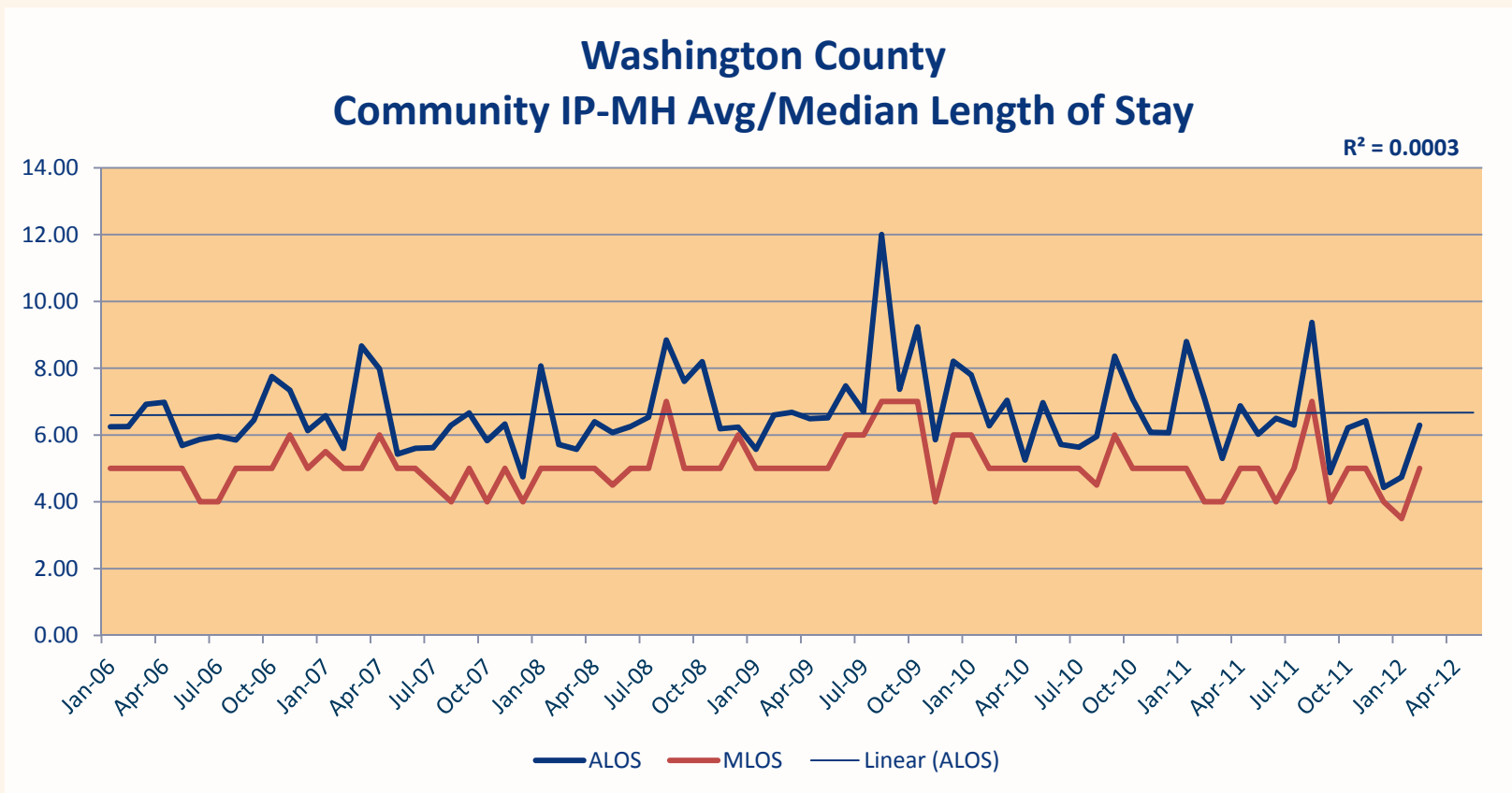
- ALOS is trending upward but has fluctuated in recent months.
- MLOS fluctuates between six and seven days.

Inpatient Length of Stay



- ALOS per month has increased approximately one day over the entire period.

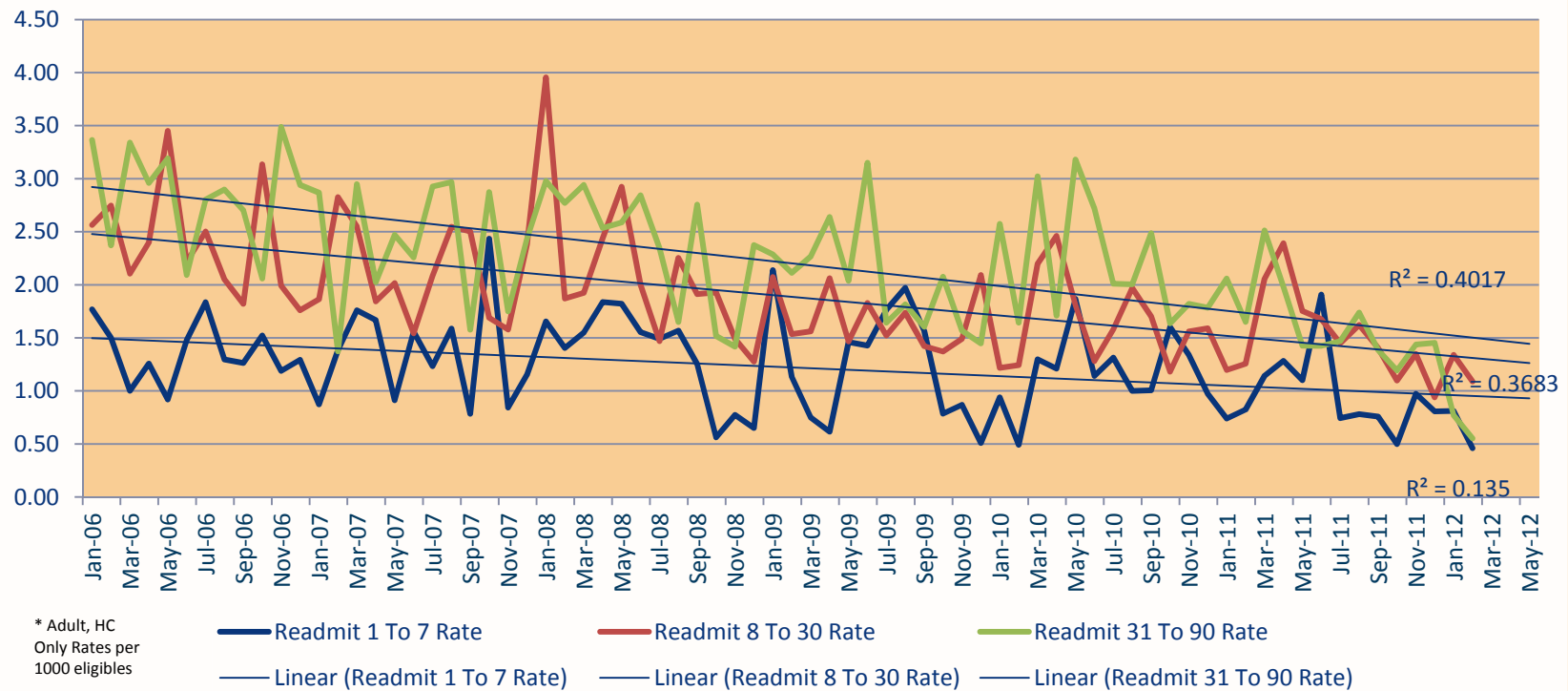
Inpatient Length of Stay



- ALOS is trending very slightly upward, but the trend is still within one day for the entire period.

Inpatient Readmissions

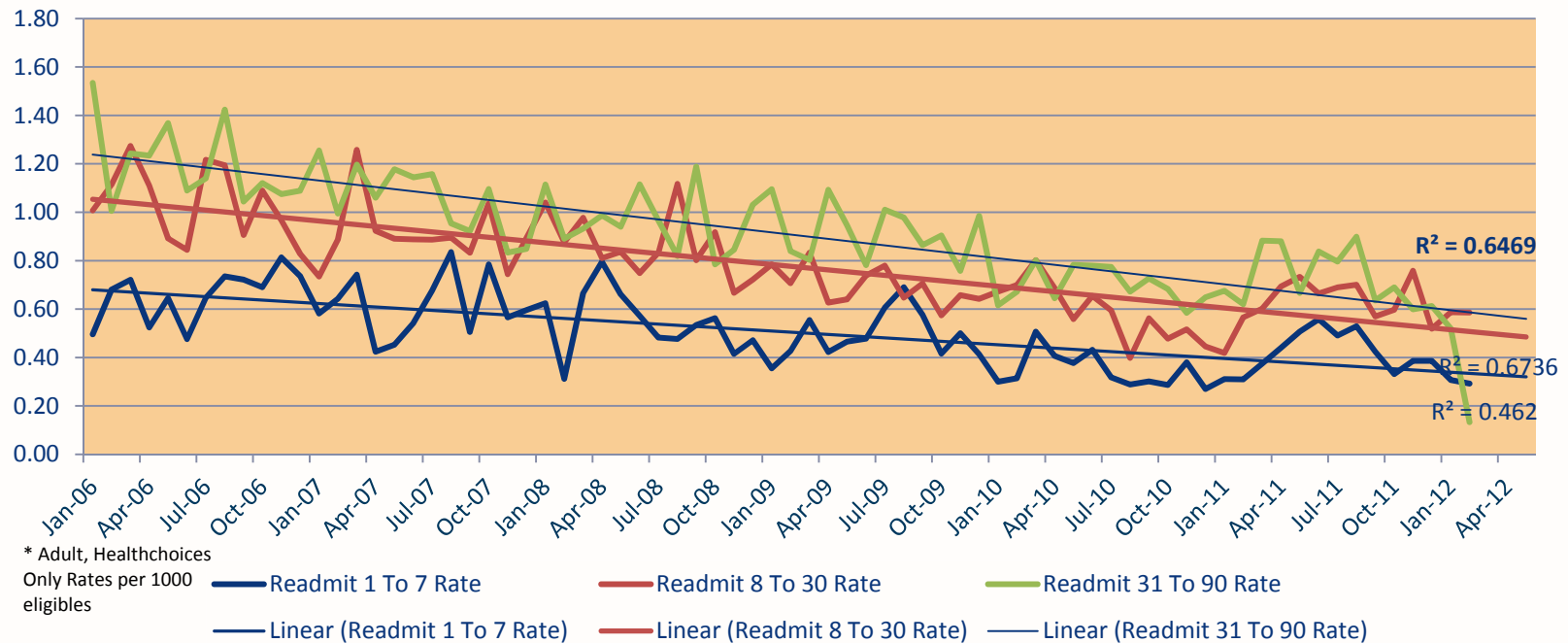
Mayview Region Community Inpatient Readmissions Rates



- Readmission rates for all categories are trending downward.

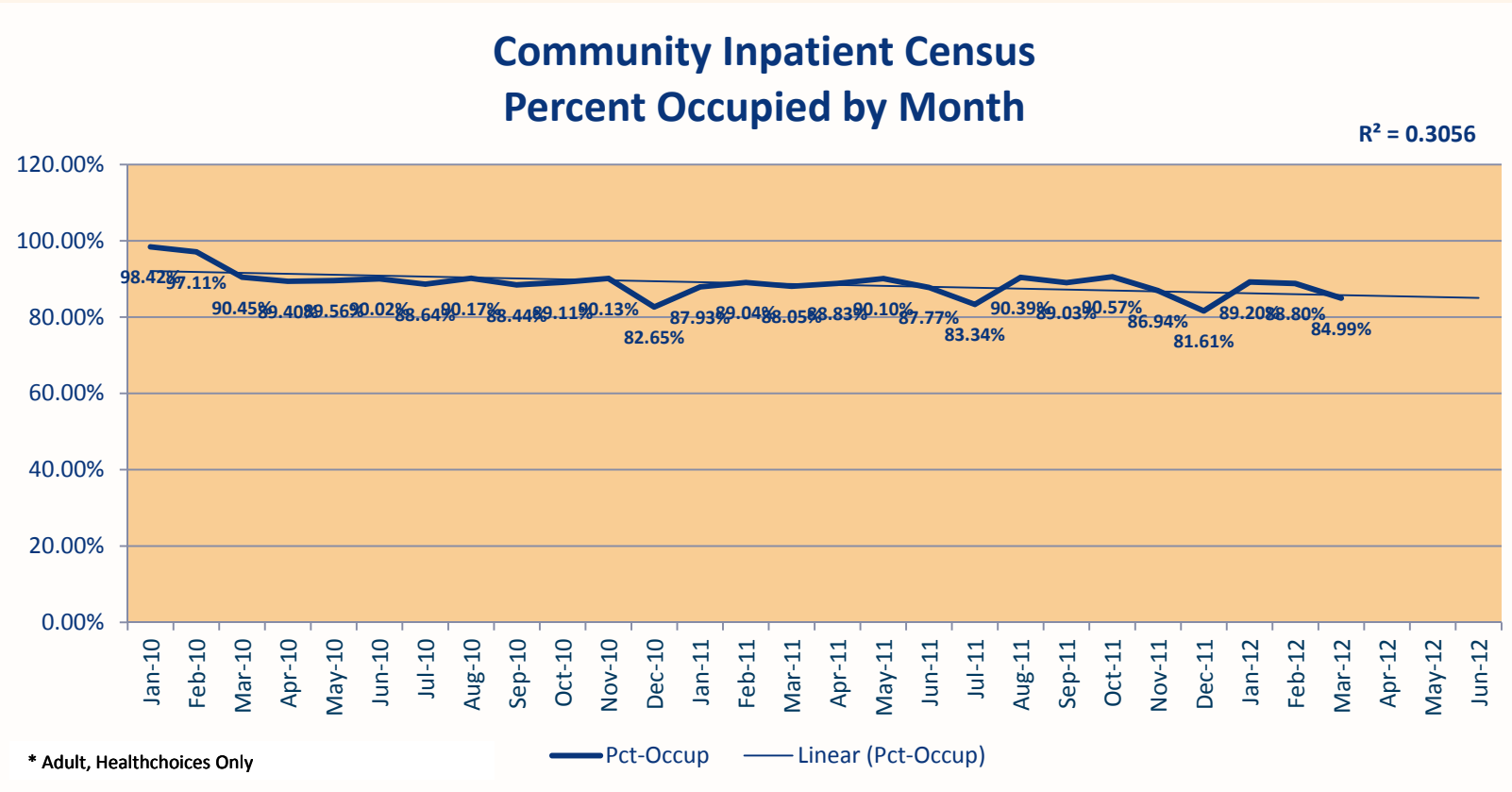
Inpatient Readmissions

Allegheny County Community Inpatient Readmission Rates



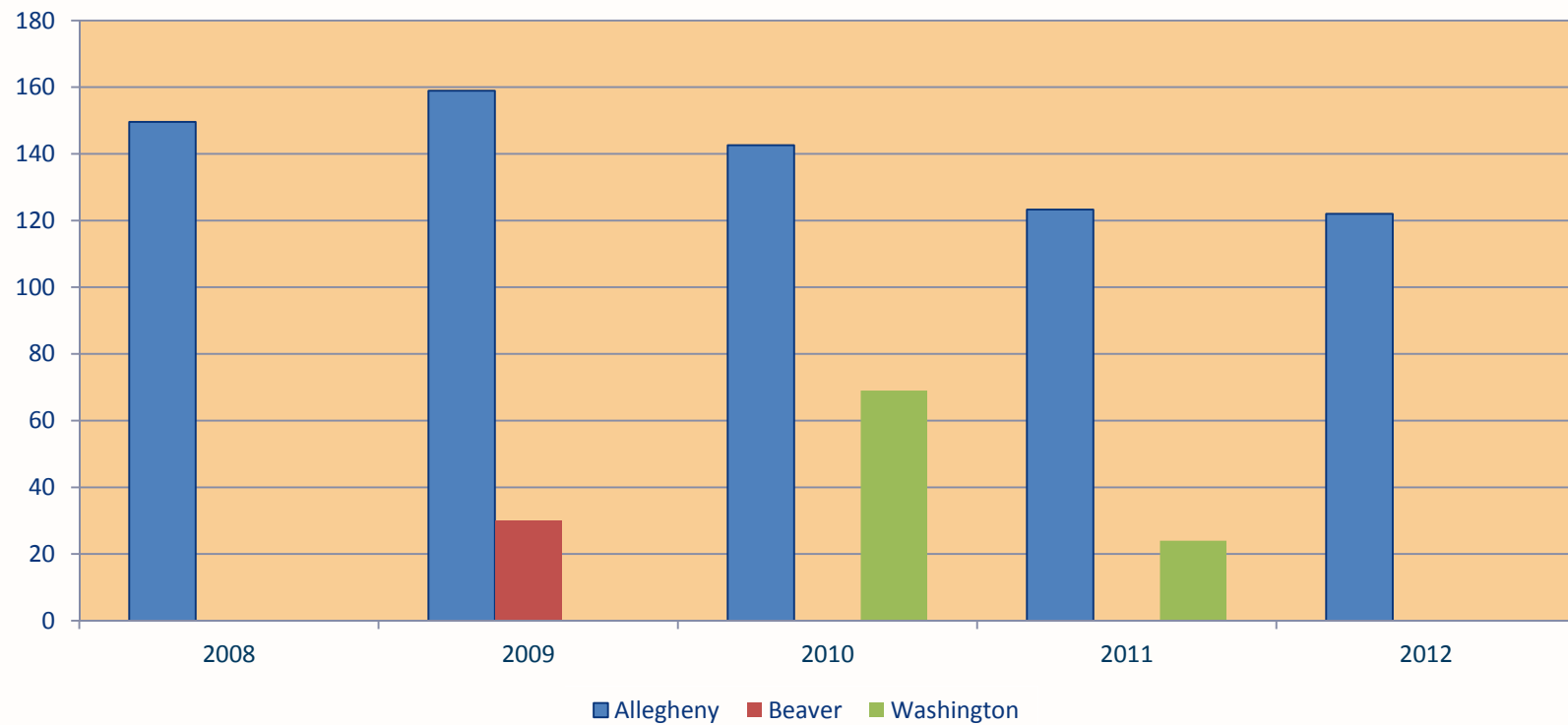
- All readmission categories are trending downward.

IP Census – Percent Occupied by Month



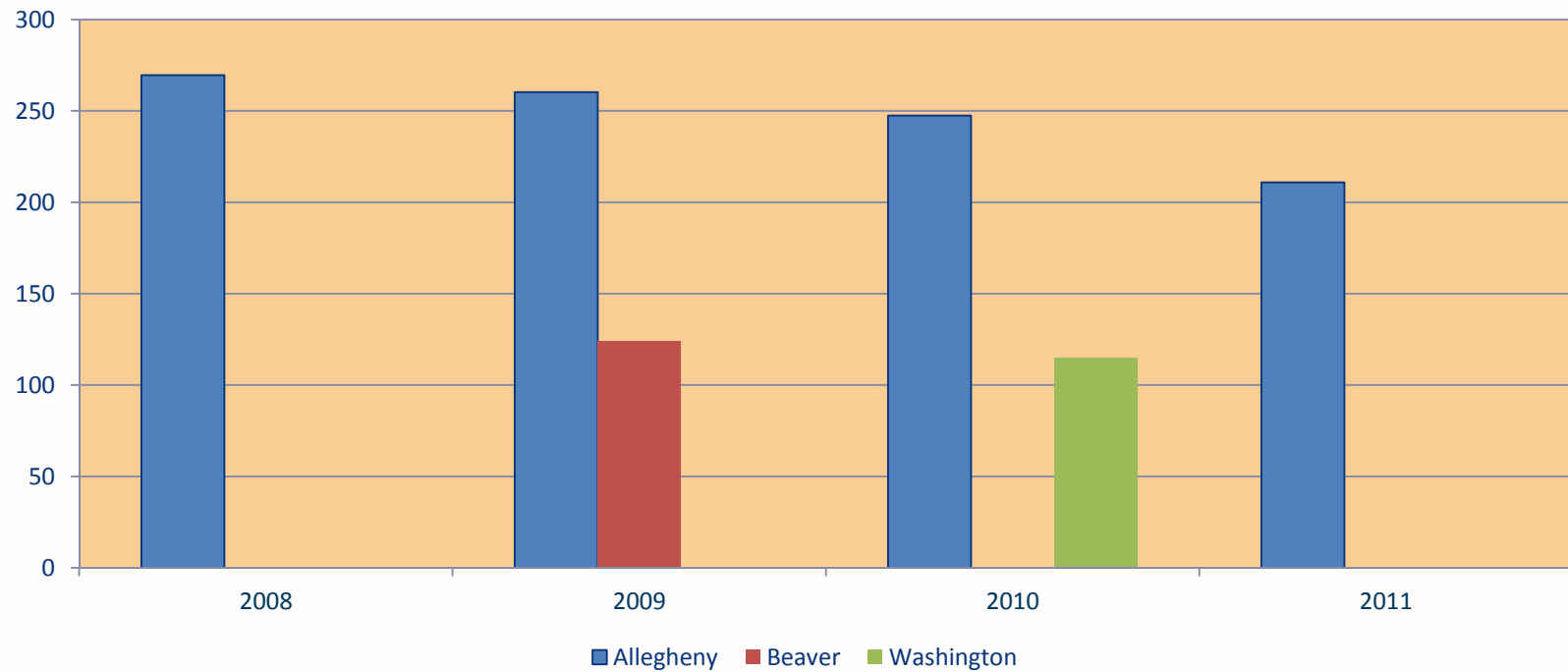
EAC

Extended Acute Care Utilization Average Length of Stay of Discharges



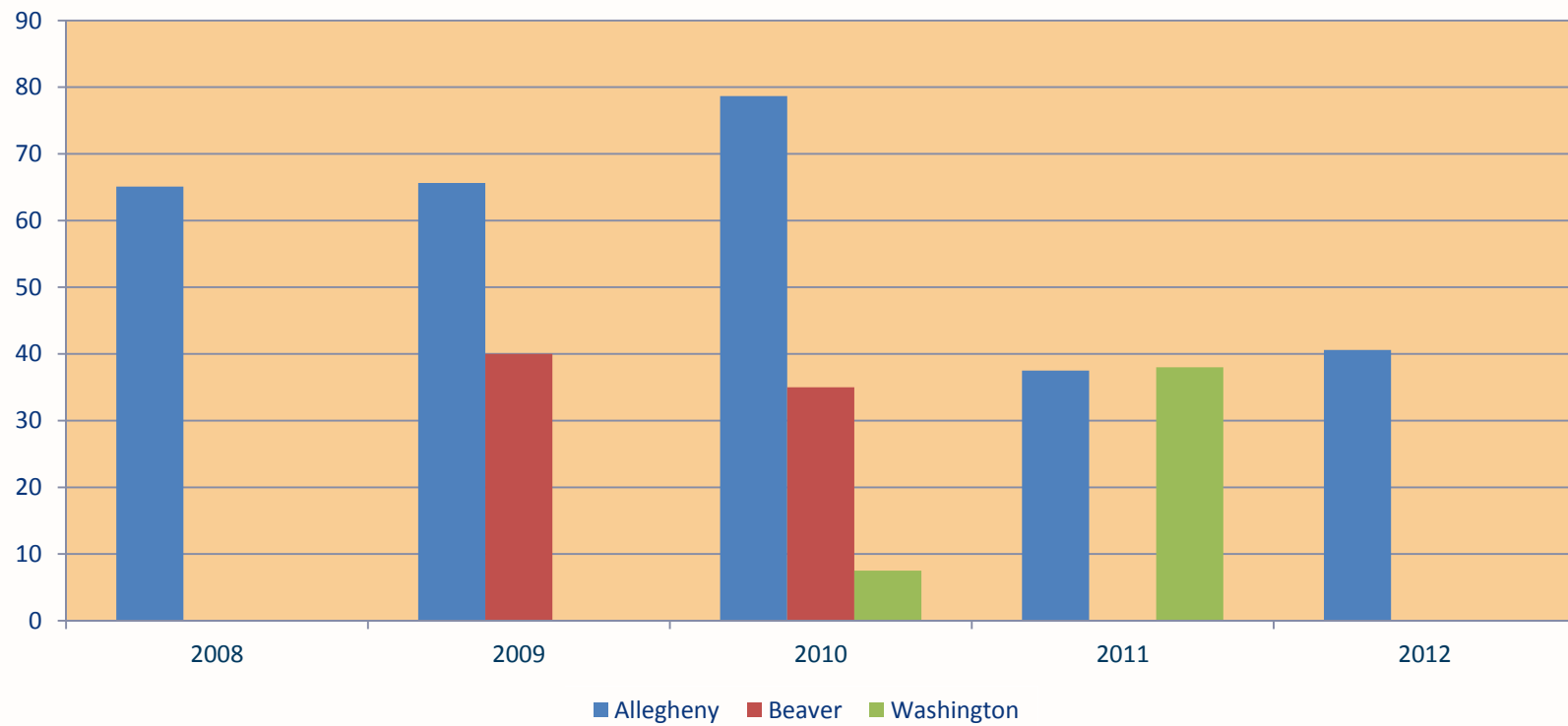
EAC

**Extended Acute Care Utilization
Average Length of Stay in System
(Inpatient Stay + EAC Stay)**



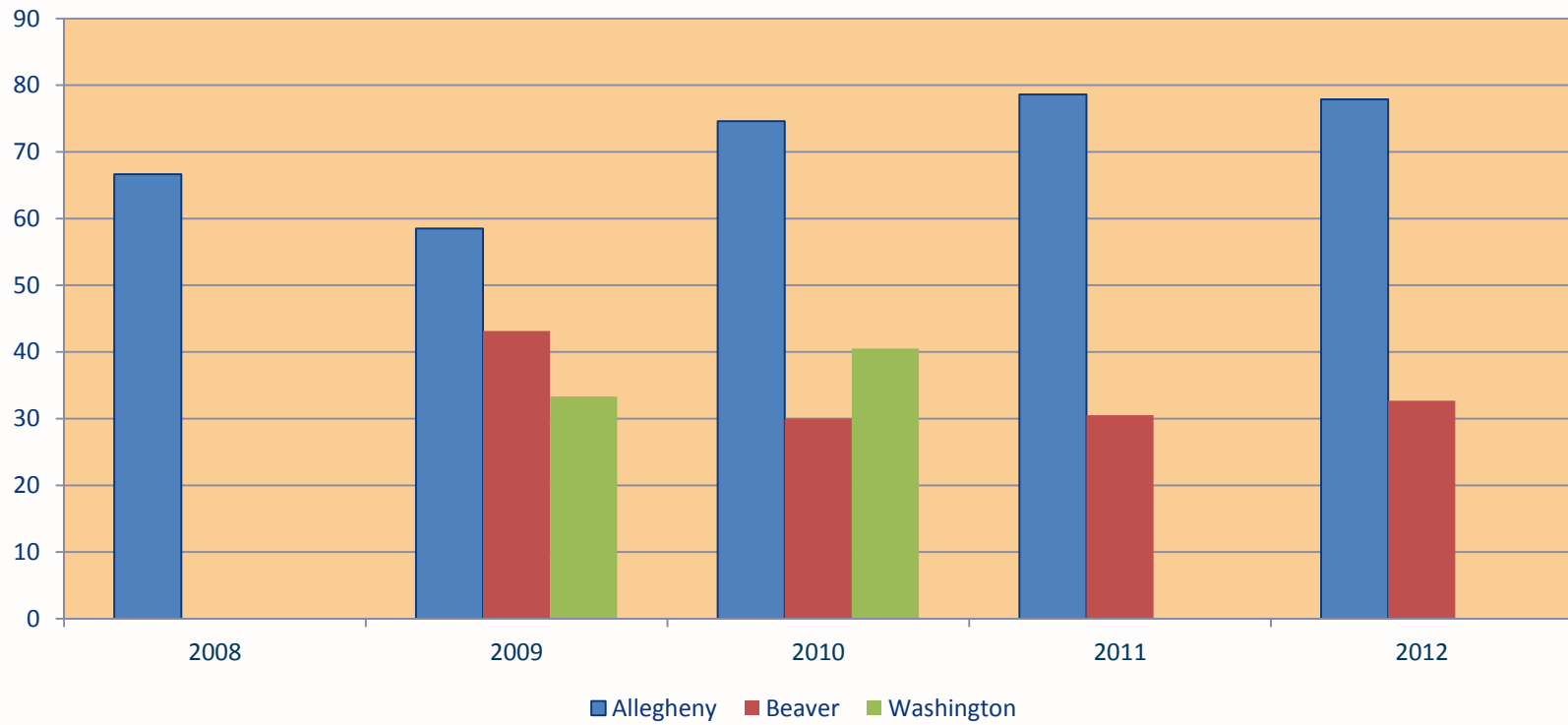
EAC

Extended Acute Care Utilization Average Length of Stay on Waiting List



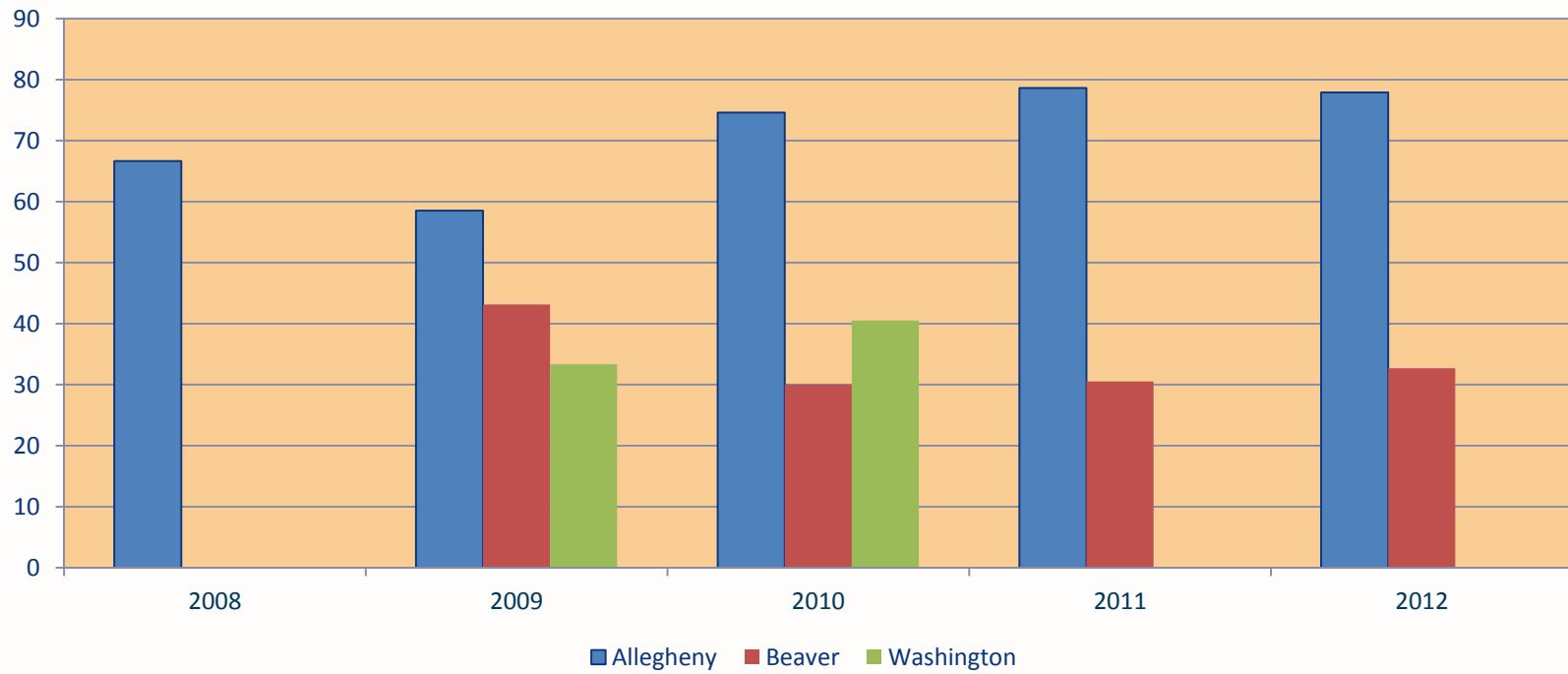
RTF-A

RTF - Adult Utilization
Average Length of Stay of Discharges



RTF-A

RTF - Adult Utilization
Average Length of Stay in System
(Inpatient Stay + EAC Stay)



RTF-A

RTF - Adult Utilization
Average Length of Stay on Waiting List

